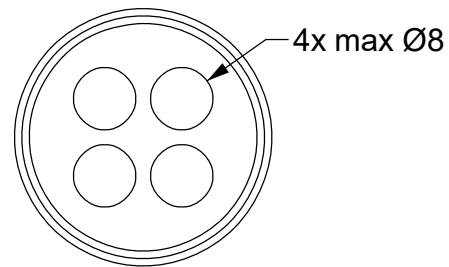
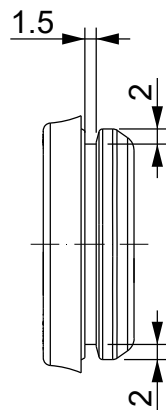
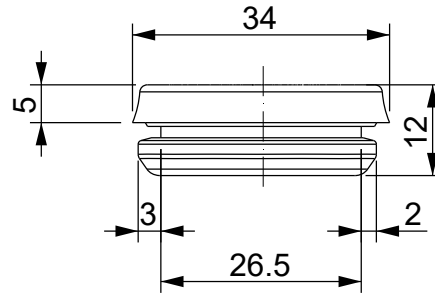
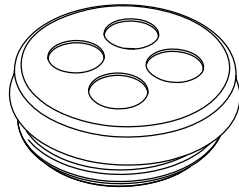


A

B

C

D



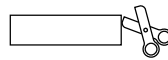
BLACK color version:

1732063505 DES PM M25/4B

Wall thickness: 1.5 - 2.5 mm (type 1) / 2.8 - 4 mm (type 2)

**Flammability:** UL94-V0, self-extinguishing  
**Temperature:** -40°C ... +105°C  
**Properties:** halogen-free, silicone-free  
**Material:** thermoplastic elastomer (TPE)

Recommended cut-out:  
 Ø25.5 mm



IP65

NEMA  
12UL TYPE  
12

ECOLAB



UL94-V0

UV  
ISO 4892-2ARoHS  
COMPLIANT

Codice / Code

1732062504

Descrizione / Description

DES PM M25/4G

Rev.

003

Materiale / Material

TPE

Colore / Color

Grey

Peso / Weight (g)

-

Unità di misura / Measure units

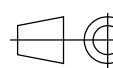
mm

Formato / Format

A4

Scala / Scale

1:1

UNI-ISO  
2768-mk

Data / Date

15/12/2021

Numero foglio / Sheet number

-

Numero progetto / Project number

-

Disegn. / Drawn

ravezzano@detas.com

Note / Notes

-

QUESTO DISEGNO E LE SUE INFORMAZIONI SONO STRETTAMENTE RISERVATE DI PROPRIETA' DETAS SPA.  
 NON UTILIZZARE PER SCOPI DIVERSI DA QUELLI PER CUI SONO STATE FORNITE. DO NOT SCALE DRAWING.

A

B

C

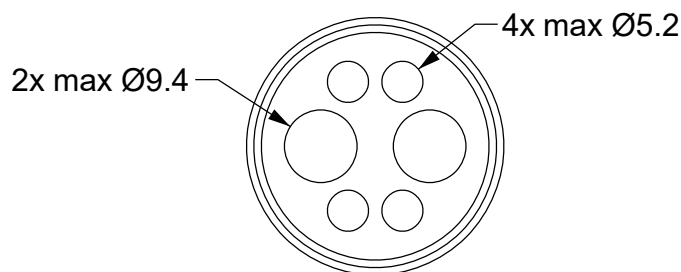
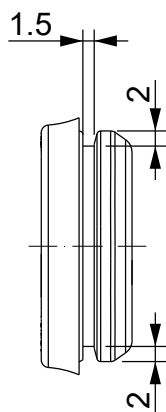
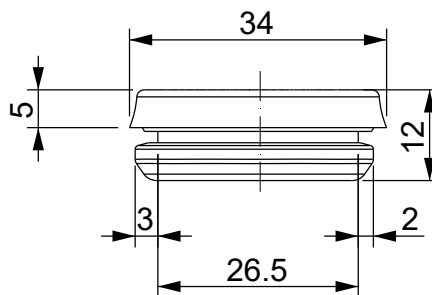
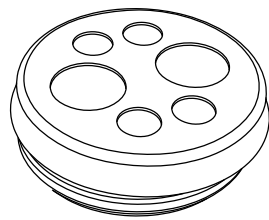
D

A

B

C

D

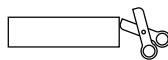


BLACK color version:

1732063507 DES PM M25/6B

Wall thickness: 1.5 - 2.5 mm (type 1) / 2.8 - 4 mm (type 2)

**Flammability:** UL94-V0, self-extinguishing  
**Temperature:** -40°C ... +105°C  
**Properties:** halogen-free, silicone-free  
**Material:** thermoplastic elastomer (TPE)

Recommended cut-out:  
Ø25.5 mm

IP65

NEMA  
12UL TYPE  
12

ECOLAB



UL94-V0

UV  
ISO 4892-2ARoHS  
COMPLIANT

Codice / Code

1732062506

Descrizione / Description

DES PM M25/6G

Rev.

003

Materiale / Material

TPE

Colore / Color

Grey

Peso / Weight (g)

-

Unità di misura / Measure units

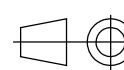
mm

Formato / Format

A4

Scala / Scale

1:1

UNI-ISO  
2768-mk

Data / Date

15/12/2021

Numero foglio / Sheet number

-

Numero progetto / Project number

-



www.detasultra.com

Disegn. / Drawn

ravezzano@detas.com

Note / Notes

-

QUESTO DISEGNO E LE SUE INFORMAZIONI SONO STRETTAMENTE RISERVATE DI PROPRIETÀ DETAS SPA. NON UTILIZZARE PER SCOPI DIVERSI DA QUELLI PER CUI SONO STATE FORNITE. DO NOT SCALE DRAWING.

A

B

C

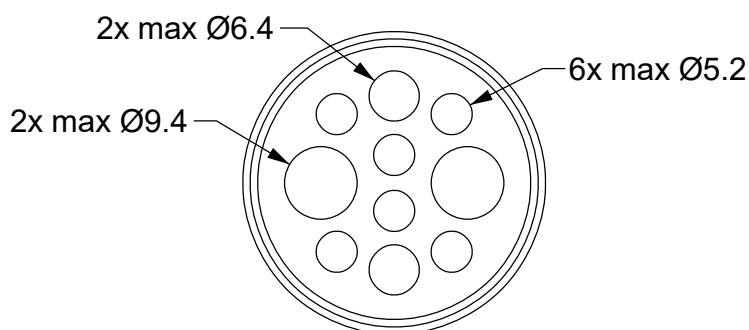
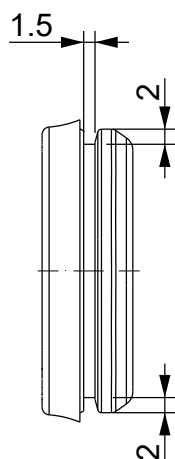
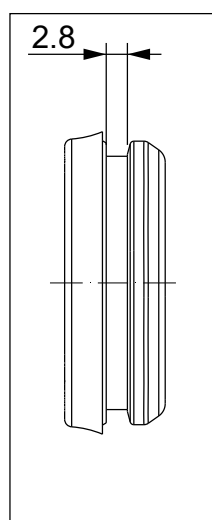
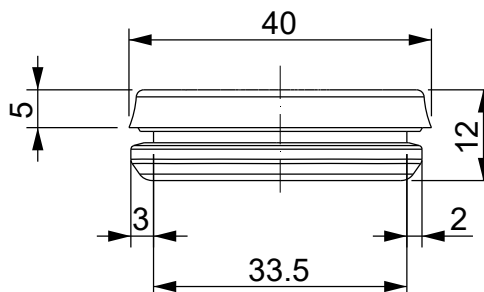
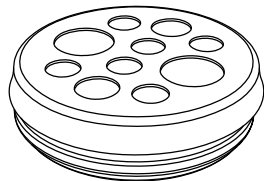
D

A

B

C

D



Type 2:  
2.8 - 4 mm wall thickness

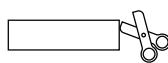
TYPE 2 version:  
1732263210 DES PM M32/10G T2

BLACK color version:  
1732064211 DES PM M32/10B T1  
1732264211 DES PM M32/10B T2

Wall thickness: 1.5 - 2.5 mm (type 1) / 2.8 - 4 mm (type 2)

**Flammability:** UL94-V0, self-extinguishing  
**Temperature:** -40°C ... +105°C  
**Properties:** halogen-free, silicone-free  
**Material:** thermoplastic elastomer (TPE)

Recommended cut-out:  
Ø32.5 mm



IP65

NEMA  
12

UL TYPE  
12



UL94-V0



RoHS  
COMPLIANT

Codice / Code

1732063210

Descrizione / Description

DES PM M32/10G

Rev.  
003

Materiale / Material

TPE

Colore / Color

Grey

Peso / Weight (g)

-

Unità di misura / Measure units

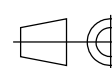
mm

Formato / Format

A4

Scala / Scale

1:1



UNI-ISO  
2768-mk

Data / Date  
15/12/2021

Numero foglio / Sheet number

-

Numero progetto / Project number

-

Disegn. / Drawn

ravezzano@detas.com

Note / Notes

-

 **DETASULTRA**  
www.detasultra.com

QUESTO DISEGNO E LE SUE INFORMAZIONI SONO STRETTAMENTE RISERVATE DI PROPRIETA' DETAS SPA.  
NON UTILIZZARE PER SCOPI DIVERSI DA QUELLI PER CUI SONO STATE FORNITE. DO NOT SCALE DRAWING.

A

B

C

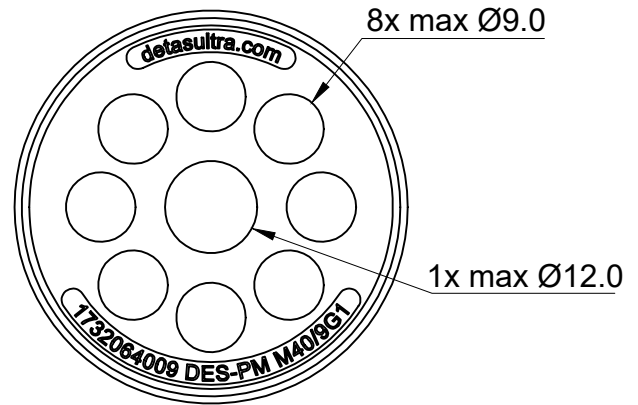
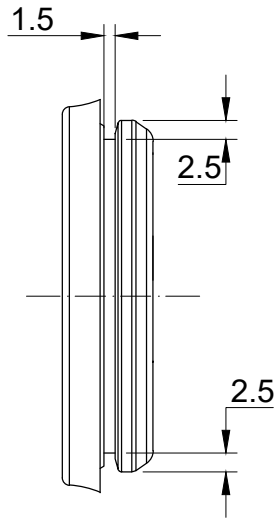
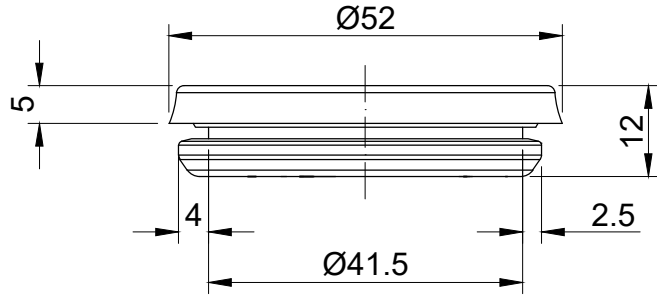
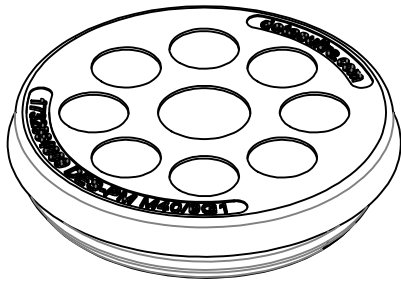
D

A

B

C

D

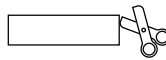


BLACK color version:

1732064012 DES-PM M40/9B

**Flammability:** UL94-V0, self-extinguishing  
**Temperature:** -40°C ... +105°C  
**Properties:** halogen-free, silicone-free  
**Material:** thermoplastic elastomer (TPE)

Recommended cut-out:  
 Ø40.5 mm



UL US  
 pending

IP65

NEMA  
 12

UL TYPE  
 12

APPROVED  
 R  
 MARK TYPE

ECOLAB

UL94-V0

UV  
 ISO 4892-2A

RoHS  
 COMPLIANT

Codice / Code

1732064009

Descrizione / Description

DES PM M40/9G

Rev.  
 000

Materiale / Material

TPE

Colore / Color

Grey

Peso / Weight (g)

-

Unità di misura / Measure units

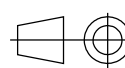
mm

Formato / Format

A4

Scala / Scale

1:1



UNI-ISO  
 2768-MK



www.detasultra.com

Data / Date  
 20/03/2023

Numero foglio / Sheet number

-

Numero progetto / Project number

-

Disegn. / Drawn  
 F. Pozzi

Note / Notes

Wall thickness: 1.5 mm

QUESTO DISEGNO E LE SUE INFORMAZIONI SONO STRETTAMENTE RISERVATE DI PROPRIETÀ DETAS SPA.  
 NON UTILIZZARE PER SCOPI DIVERSI DA QUELLI PER CUI SONO STATE FORNITE. DO NOT SCALE DRAWING.

A

B

C

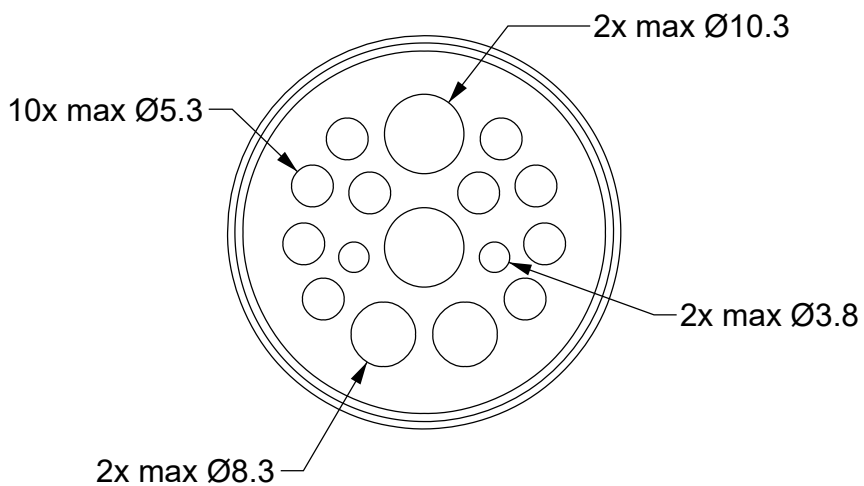
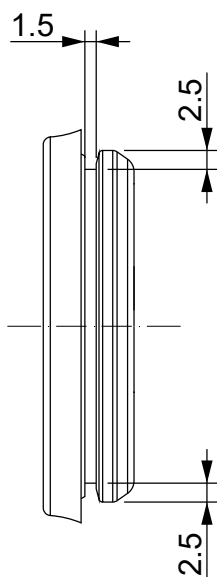
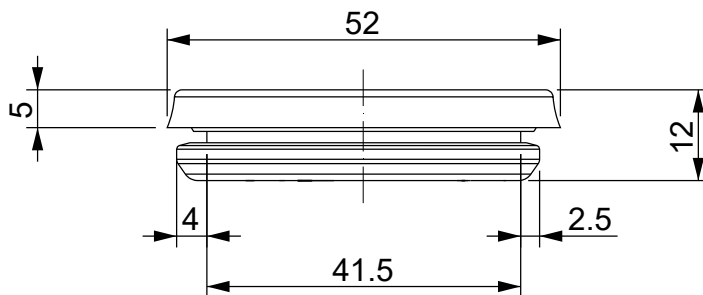
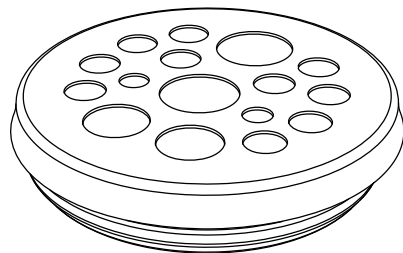
D

A

B

C

D

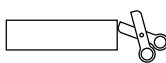


BLACK color version:  
1732064017 DES PM M40/16B Type 2

Wall thickness: 1.5 - 2.5 mm (type 1) / 2.8 - 4 mm (type 2)

**Flammability:** UL94-V0, self-extinguishing  
**Temperature:** -40°C ... +105°C  
**Properties:** halogen-free, silicone-free  
**Material:** thermoplastic elastomer (TPE)

Recommended cut-out:  
Ø40.5 mm



IP65

NEMA  
12

UL TYPE  
12



ECOLAB



Codice / Code

1732064016

Descrizione / Description

DES PM M40/16G

Rev.

003

Materiale / Material

TPE

Colore / Color

Grey

Peso / Weight (g)

-

Unità di misura / Measure units

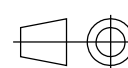
mm

Formato / Format

A4

Scala / Scale

1:1



UNI-ISO  
2768-mk



Data / Date  
15/12/2021

Numero foglio / Sheet number

-

Numero progetto / Project number

-

Disegn. / Drawn  
ravezzano@detas.com

Note / Notes

-

QUESTO DISEGNO E LE SUE INFORMAZIONI SONO STRETTAMENTE RISERVATE DI PROPRIETÀ DETAS SPA.  
NON UTILIZZARE PER SCOPI DIVERSI DA QUELLI PER CUI SONO STATE FORNITE. DO NOT SCALE DRAWING.

A

B

C

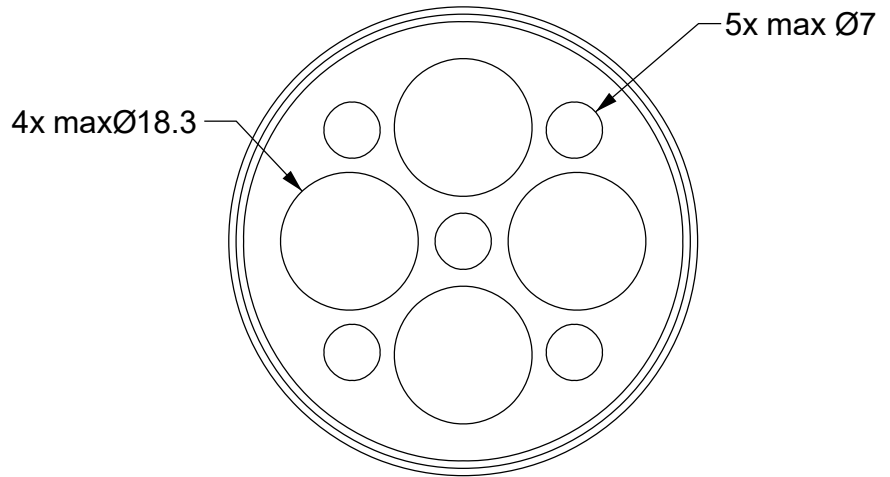
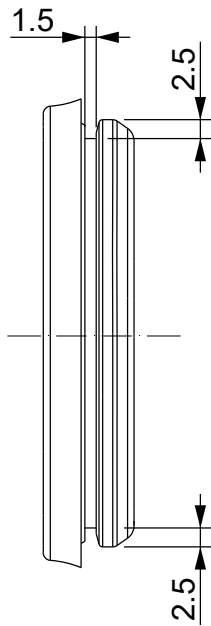
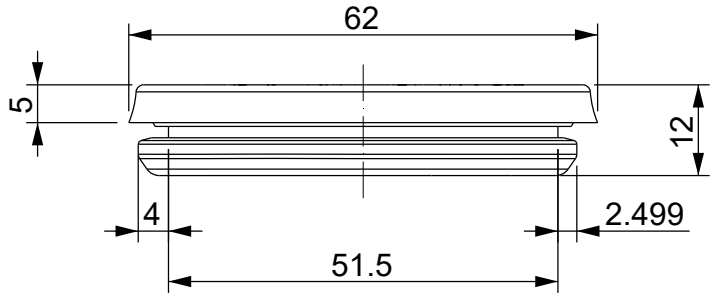
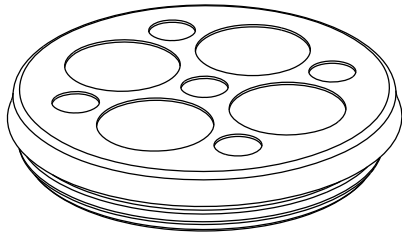
D

A

B

C

D

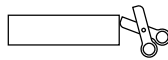


BLACK color version:

1732066010 DES PM M50/9B

Wall thickness: 1.5 - 2.5 mm (type 1) / 2.8 - 4 mm (type 2)

**Flammability:** UL94-V0, self-extinguishing  
**Temperature:** -40°C ... +105°C  
**Properties:** halogen-free, silicone-free  
**Material:** thermoplastic elastomer (TPE)

Recommended cut-out:  
Ø50.5 mm

IP65

NEMA  
12UL TYPE  
12

ECOLAB



UL94-V0

UV  
ISO 4892-2ARoHS  
COMPLIANT

Codice / Code

1732065009

Descrizione / Description

DES PM M50/9G

Rev.

003

Materiale / Material

TPE

Colore / Color

Grey

Peso / Weight (g)

-

Unità di misura / Measure units

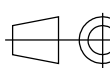
mm

Formato / Format

A4

Scala / Scale

1:1

UNI-ISO  
2768-mk

Data / Date

15/12/2021

Numero foglio / Sheet number

-

Numero progetto / Project number

-

Disegn. / Drawn

ravezzano@detas.com

Note / Notes

-

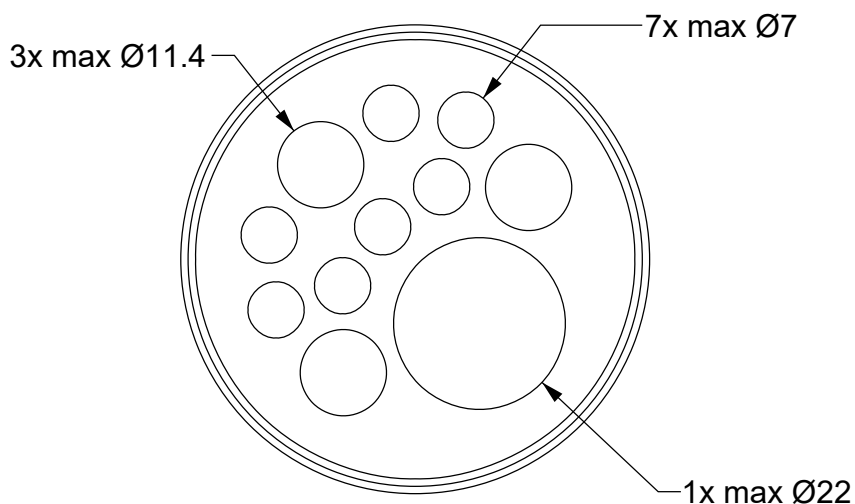
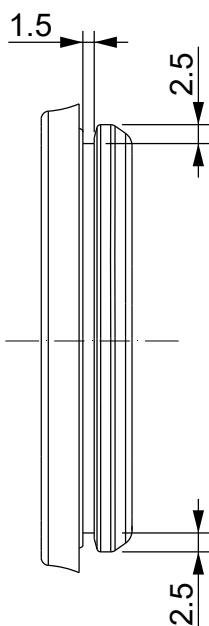
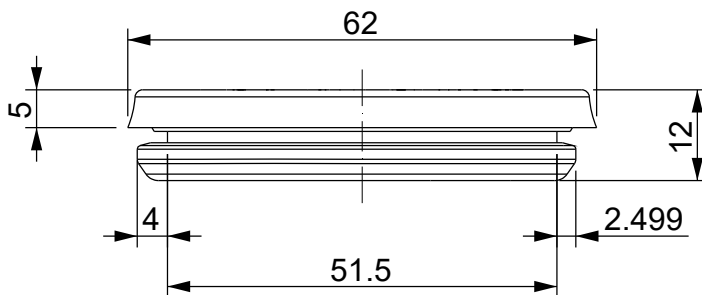
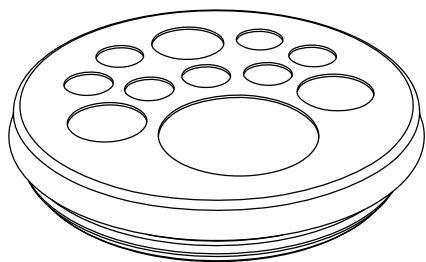
QUESTO DISEGNO E LE SUE INFORMAZIONI SONO STRETTAMENTE RISERVATE DI PROPRIETÀ DETAS SPA. NON UTILIZZARE PER SCOPI DIVERSI DA QUELLI PER CUI SONO STATE FORNITE. DO NOT SCALE DRAWING.

A

B

C

D

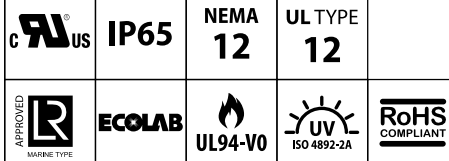
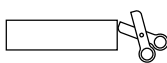


BLACK color version:  
1732066012 DES PM M50/11B

Wall thickness: 1.5 - 2.5 mm (type 1) / 2.8 - 4 mm (type 2)

**Flammability:** UL94-V0, self-extinguishing  
**Temperature:** -40°C ... +105°C  
**Properties:** halogen-free, silicone-free  
**Material:** thermoplastic elastomer (TPE)

Recommended cut-out:  
Ø50.5 mm



Codice / Code

1732065011

Descrizione / Description

DES PM M50/11G

Rev.  
003

Materiale / Material  
TPE

Colore / Color  
Grey

Peso / Weight (g)  
-

Unità di misura / Measure units  
mm

Formato / Format  
A4

Scala / Scale  
1:1



Data / Date  
15/12/2021

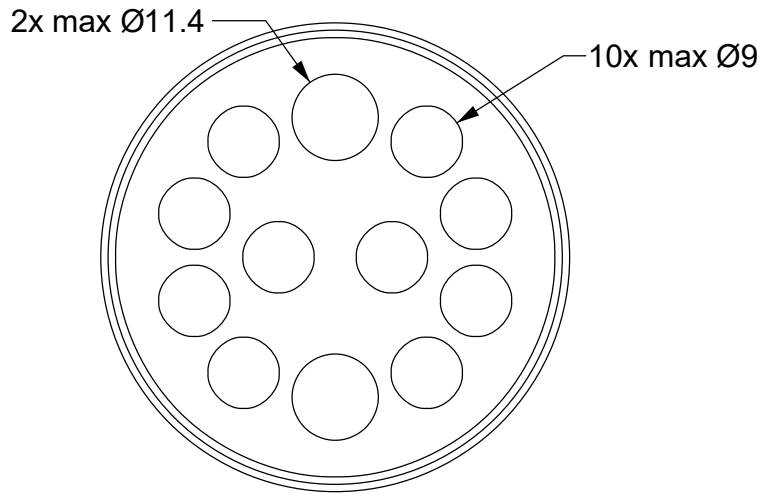
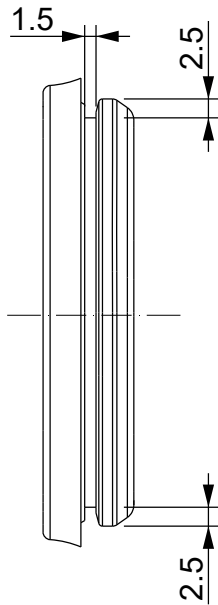
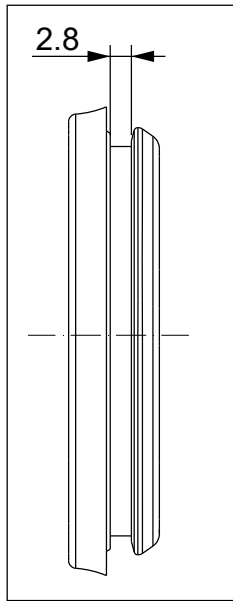
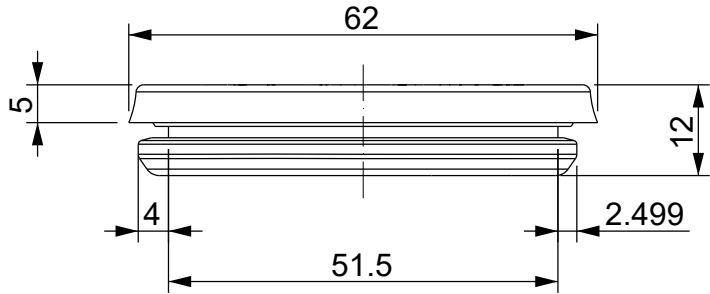
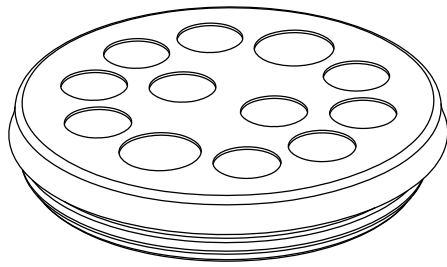
Numero foglio / Sheet number  
-

Numero progetto / Project number  
-

Disegn. / Drawn  
ravezzano@detas.com

Note / Notes  
-

QUESTO DISEGNO E LE SUE INFORMAZIONI SONO STRETTAMENTE RISERVATE DI PROPRIETÀ DETAS SPA. NON UTILIZZARE PER SCOPI DIVERSI DA QUELLI PER CUI SONO STATE FORNITE. DO NOT SCALE DRAWING.



Type 2:  
2.8 - 4 mm wall thickness

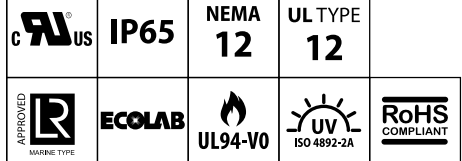
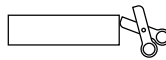
TYPE 2 version:  
1732265012 DES PM M50/12G T2

BLACK color version:  
1732066013 DES PM M50/12B T1  
1732266013 DES PM M50/12B T2

Wall thickness: 1.5 - 2.5 mm (type 1) / 2.8 - 4 mm (type 2)

**Flammability:** UL94-V0, self-extinguishing  
**Temperature:** -40°C ... +105°C  
**Properties:** halogen-free, silicone-free  
**Material:** thermoplastic elastomer (TPE)

Recommended cut-out:  
Ø50.5 mm



Codice / Code

1732065012

Descrizione / Description

DES PM M50/12G

Rev.  
003

Materiale / Material  
TPE

Colore / Color  
Grey

Peso / Weight (g)  
-

Unità di misura / Measure units  
mm

Formato / Format  
A4

Scala / Scale  
1:1



Data / Date  
15/12/2021

Numero foglio / Sheet number  
-

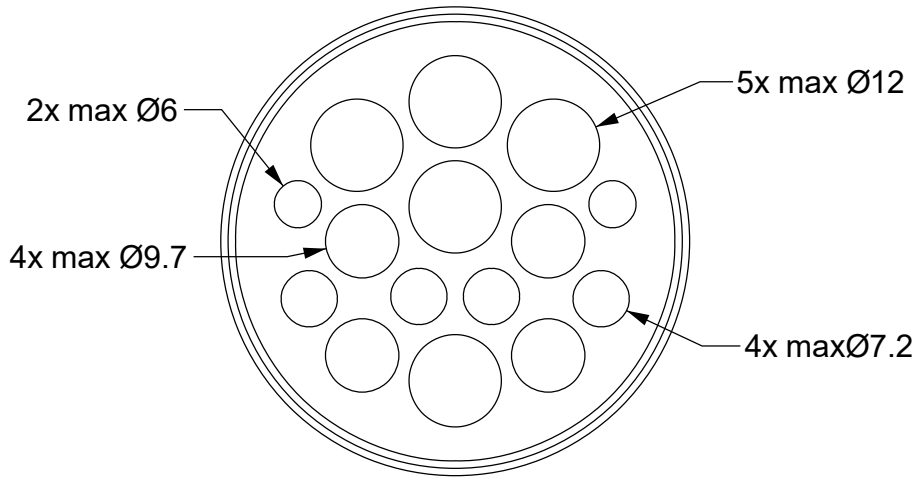
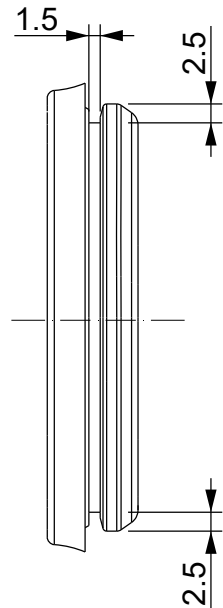
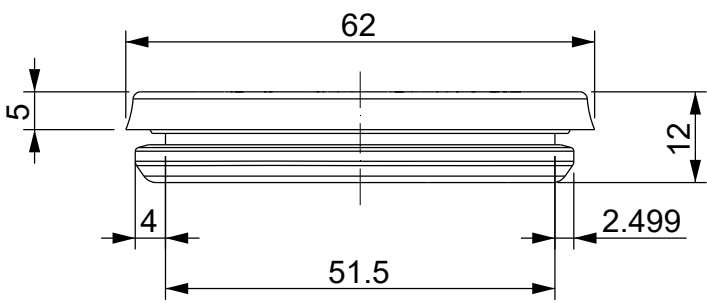
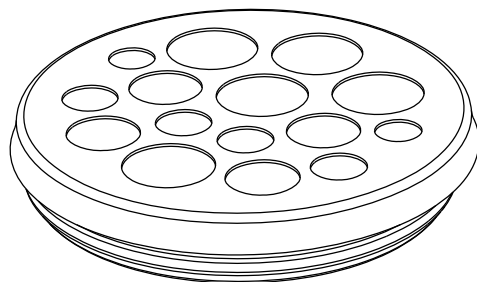
Numero progetto / Project number  
-

Disegn. / Drawn  
ravezzano@detas.com

Note / Notes  
-

QUESTO DISEGNO E LE SUE INFORMAZIONI SONO STRETTAMENTE RISERVATE DI PROPRIETA' DETAS SPA. NON UTILIZZARE PER SCOPI DIVERSI DA QUELLI PER CUI SONO STATE FORNITE. DO NOT SCALE DRAWING.



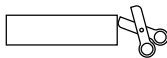


BLACK color version:  
1732066016 DES PM M50/15B

Wall thickness: 1.5 - 2.5 mm (type 1) / 2.8 - 4 mm (type 2)

**Flammability:** UL94-V0, self-extinguishing  
**Temperature:** -40°C ... +105°C  
**Properties:** halogen-free, silicone-free  
**Material:** thermoplastic elastomer (TPE)

Recommended cut-out:  
Ø50.5 mm



	<b>IP65</b>	<b>NEMA 12</b>	<b>UL TYPE 12</b>
	<b>ECOLAB</b>		
		<b>RoHS COMPLIANT</b>	

Codice / Code  
**1732065015**

Descrizione / Description  
**DES PM M50/15G**

Rev.  
003

Materiale / Material TPE	Colore / Color Grey	Peso / Weight (g) -
-----------------------------	------------------------	------------------------

Unità di misura / Measure units mm	Formato / Format A4	Scala / Scale 1:1	
---------------------------------------	------------------------	----------------------	--

Numero foglio / Sheet number  
-

Numero progetto / Project number  
-

Data / Date  
15/12/2021

Disegn. / Drawn  
ravezzano@detas.com

Note / Notes  
-



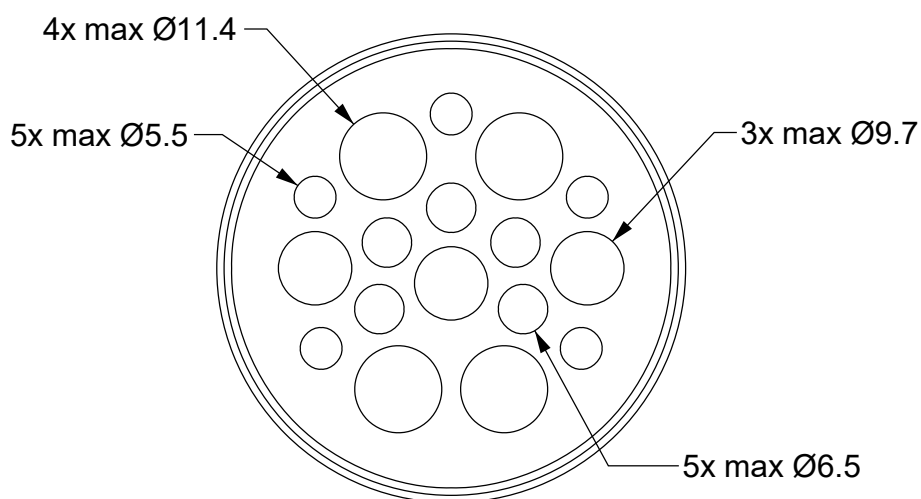
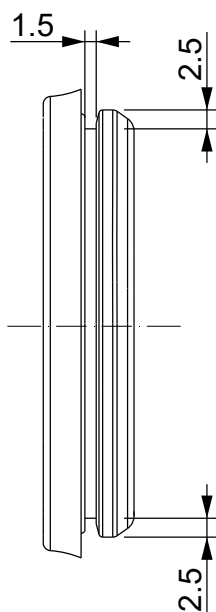
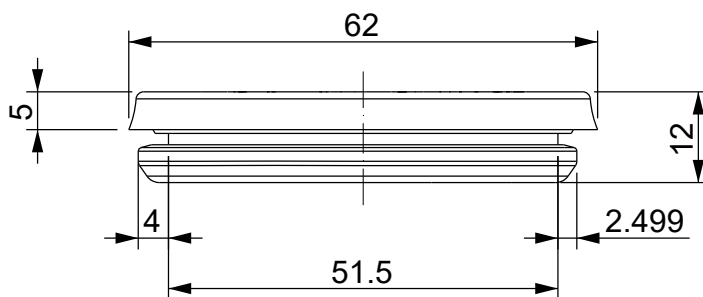
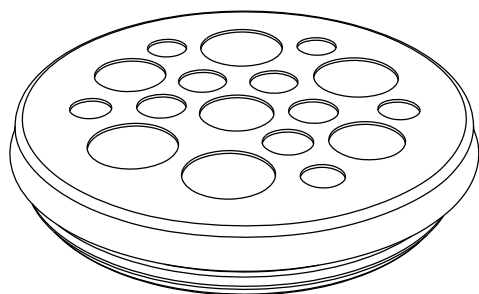
QUESTO DISEGNO E LE SUE INFORMAZIONI SONO STRETTAMENTE RISERVATE DI PROPRIETA' DETAS SPA. NON UTILIZZARE PER SCOPI DIVERSI DA QUELLI PER CUI SONO STATE FORNITE. DO NOT SCALE DRAWING.

A

B

C

D

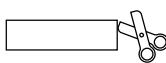


BLACK color version:  
1732066018 DES PM M50/17B

Wall thickness: 1.5 - 2.5 mm (type 1) / 2.8 - 4 mm (type 2)

**Flammability:** UL94-V0, self-extinguishing  
**Temperature:** -40°C ... +105°C  
**Properties:** halogen-free, silicone-free  
**Material:** thermoplastic elastomer (TPE)

Recommended cut-out:  
Ø50.5 mm



IP65

NEMA  
12

UL TYPE  
12



ECOLAB



UL94-V0



UV  
ISO 4892-2A



RoHS  
COMPLIANT

Codice / Code

1732065017

Descrizione / Description

DES PM M50/17G

Rev.

003

Materiale / Material

TPE

Colore / Color

Grey

Peso / Weight (g)

-

Unità di misura / Measure units

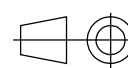
mm

Formato / Format

A4

Scala / Scale

1:1



UNI-ISO  
2768-mk



Data / Date  
15/12/2021

Numero foglio / Sheet number

-

Numero progetto / Project number

-

Disegn. / Drawn  
ravezzano@detas.com

Note / Notes

-

QUESTO DISEGNO E LE SUE INFORMAZIONI SONO STRETTAMENTE RISERVATE DI PROPRIETA' DETAS SPA.  
NON UTILIZZARE PER SCOPI DIVERSI DA QUELLI PER CUI SONO STATE FORNITE. DO NOT SCALE DRAWING.

A

B

C

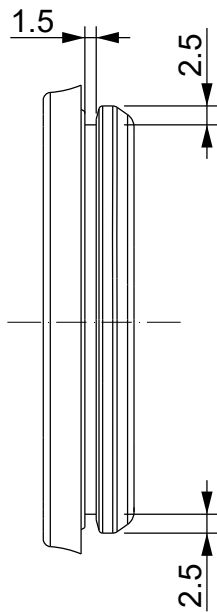
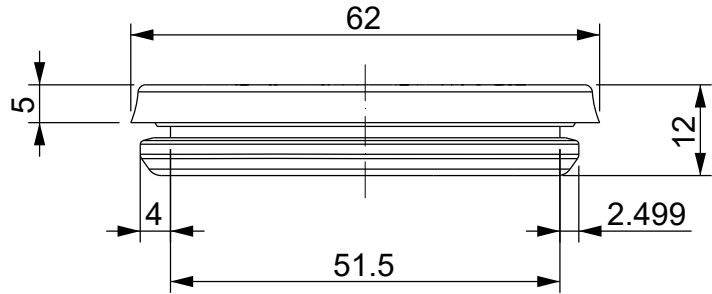
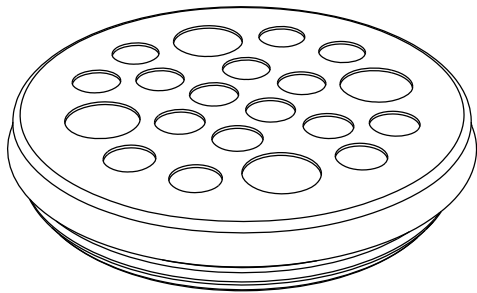
D

A

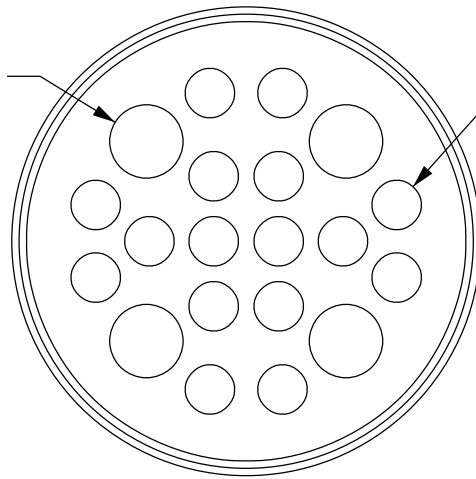
B

C

D



4x max Ø9.7



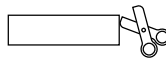
16x max Ø6.5

BLACK color version:

1732066021 DES PM M50/20B

Wall thickness: 1.5 - 2.5 mm (type 1) / 2.8 - 4 mm (type 2)

**Flammability:** UL94-V0, self-extinguishing  
**Temperature:** -40°C ... +105°C  
**Properties:** halogen-free, silicone-free  
**Material:** thermoplastic elastomer (TPE)

Recommended cut-out:  
Ø50.5 mm

IP65

NEMA  
12UL TYPE  
12

ECOLAB



UL94-V0

UV  
ISO 4892-2ARoHS  
COMPLIANT

Codice / Code

1732065020

Descrizione / Description

DES PM M50/20G

Rev.

003

Materiale / Material

TPE

Colore / Color

Grey

Peso / Weight (g)

-

Unità di misura / Measure units

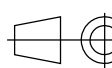
mm

Formato / Format

A4

Scala / Scale

1:1

UNI-ISO  
2768-mk

Data / Date

15/12/2021

Numero foglio / Sheet number

-

Numero progetto / Project number

-

Disegn. / Drawn

ravezzano@detas.com

Note / Notes

-

QUESTO DISEGNO E LE SUE INFORMAZIONI SONO STRETTAMENTE RISERVATE DI PROPRIETA' DETAS SPA. NON UTILIZZARE PER SCOPI DIVERSI DA QUELLI PER CUI SONO STATE FORNITE. DO NOT SCALE DRAWING.

A

B

C

D